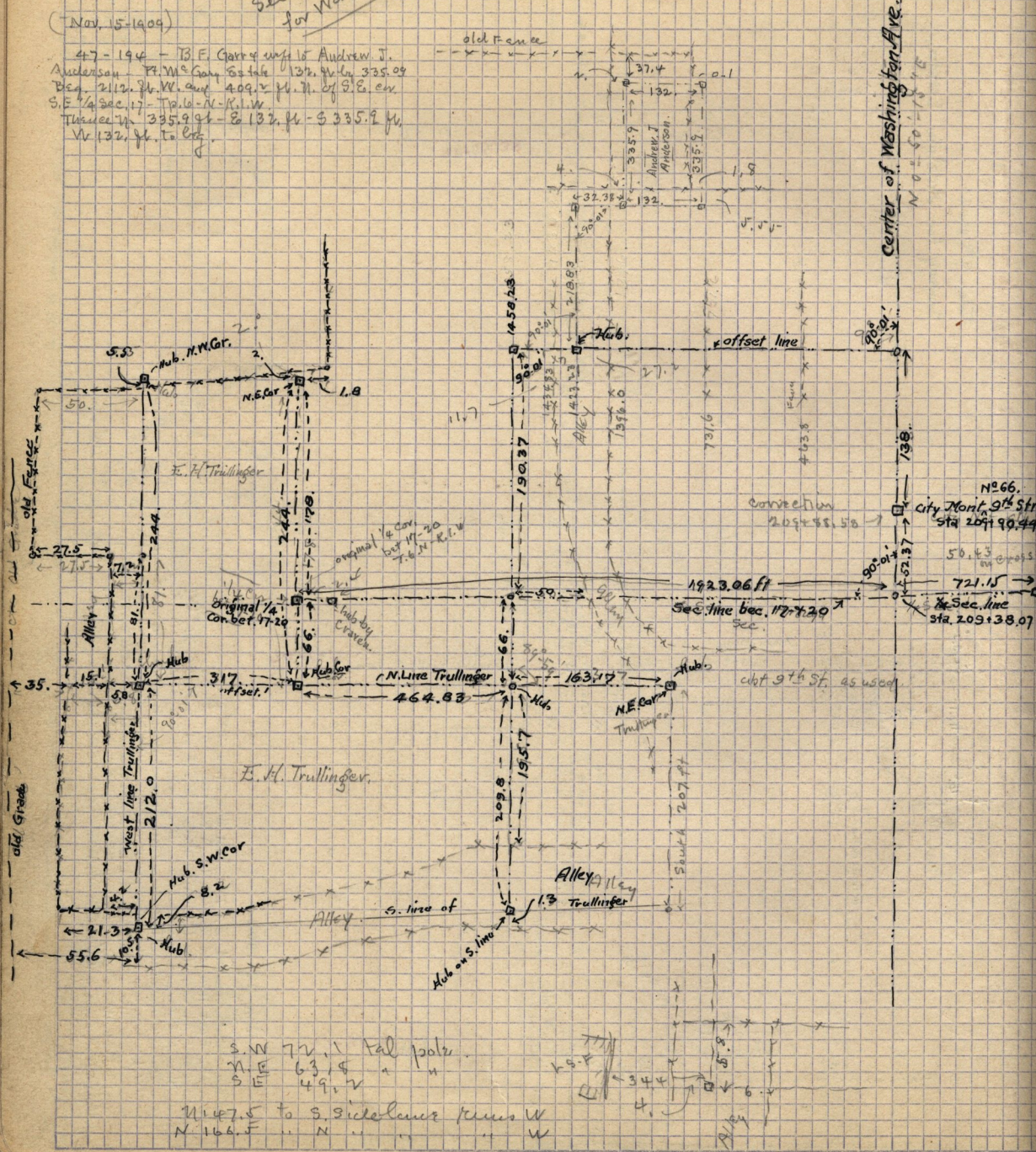


See also p. 41-93
 for work in this vicinity

(Nov. 15-1909)

47-194 - B.E. Garry wpt to Andrew J. Anderson. P.M. Garry 50 in 132 ft. wpt 335.09
 Beg. 2112 ft. W. line 409 ft. E. N. of S.E. cor
 S.E. 1/4 Sec. 17 - T.P. 6-N.-R. 1-W.
 Thence W. 335.99 ft - E. 132 ft. W. - S. 335.9 ft
 W. 132 ft. to Cor.



S.W.	77.1	1	Fal pools
N.E.	63.5	"	"
S.E.	49.2	"	"

W 147.5 to S. side line minus W
 N 166.5 N